

# SUBHALAXMI

# E N C L A V E



# SUBHALAXMI Enclave

The unique structure of Subhalaxmi Enclave is the perfect example of how form and function complement each other to accommodate all the necessities of modern living, while ensuring the efficient use of space.



“If it doesn’t enhance human life in some way, then it may as well not exist”.

Every living space at Subhalaxmi Enclave has been thoughtfully planned to make you instantly fall in love with the space and elevate the quality of your life.

These smartly laid out homes, together with the unique structure of the building, ensure an abundance of natural light and ventilation.

At Subhalaxmi Enclave, you will have room for a healthy lifestyle. Equipped with a modern kitchen and ample storage spaces, it has all the ingredients to enable a wholesome and happy lifestyle.

We believe there is more to architecture than building. It is thoughtful design of spaces. Everywhere around us, we see structures embodying thought.

Some thoughts stand tall and take our breath away, some cradle us in a familiar air of comfort, while others simply make life more convenient.

At Subhalaxmi Enclave, thought is the soul of design, ushering you into a new realm of architecture.



SUBHALAXMI Enclave



# SUBHALAXMI Enclave

relaxing in the most comforting space of your home. The master bedroom has been designed to bring about an atmosphere of ease and relaxation.

The ample light and the soothing colour tones add up to create a personal space that strikes the perfect balance between warmth and privacy.

The Cheerful and friendly spaces at Subhalaxmi Enclave provide a colourful and vibrant environment, that encourage children to discover, learn and enjoy the joys of childhood.



# specifications

## FLOORING

### COMMON AREA:

Lifts / Lobbies & Corridors : Marble / Granite / Tiles flooring  
Stilt Floor Chucker / Paver Tiles  
Vitrified tile flooring in upper floors  
Staircases :Vitrified tile flooring

### APARTMENTS :

Living / Dining / Foyer :Vitrified tile flooring  
Master Bedroom :Vitrified tile flooring  
Other Bedrooms :Vitrified tile flooring  
Balcony / Utility : Ceramic tile flooring

### KITCHEN :

Vitrified tile flooring  
Provision for modular kitchen

### BATHROOMS :

Anti-skid ceramic tile flooring  
CP Fittings : Jaquar / equivalent  
Sanitary Ware : Hindustan / Parryware or equivalent

### DOOR & WINDOWS :

Apartment Main Door : Solid wood frame with BSTV  
(Both Side Teak Veneer) / Masonite skin shutter with  
melamine polishing on both sides  
Bedroom Doors : Solid core flush door & Masonite skin  
with hardwood frame  
Windows & Ventilators : UPVC / Anodised aluminum windows  
with sliding shutters and safety grill with provision for bug screen

### ELECTRICAL:

Concealed PVC conduit with copper wiring  
Modular switches of Anchor Roma or equivalent

## PAINT:

Exterior finish of long lasting texture paint  
Internal walls in plastic emulsion & ceiling with oil bound distemper  
Steel & wood works in synthetic enamel paint  
Common areas in acrylic emulsion paint / oil bound distemper

## POWER SUPPLY:

4 KW for a 2-bedroom apartment  
6 KW for a 3-bedroom apartment

## STANDBY POWER :

- a. 100% DG back up for emergency power for lifts, pumps & common lighting
- b. Apartments - DG back up.
  - 2 KW for a 2-bedroom apartment
  - 3 KW for a 3-bedroom apartment

## LIFTS :

6 passenger lifts.

Fire protection system

Car parking stilt level on ownership basis only.

Sewage Treatment Plant designed as per load.

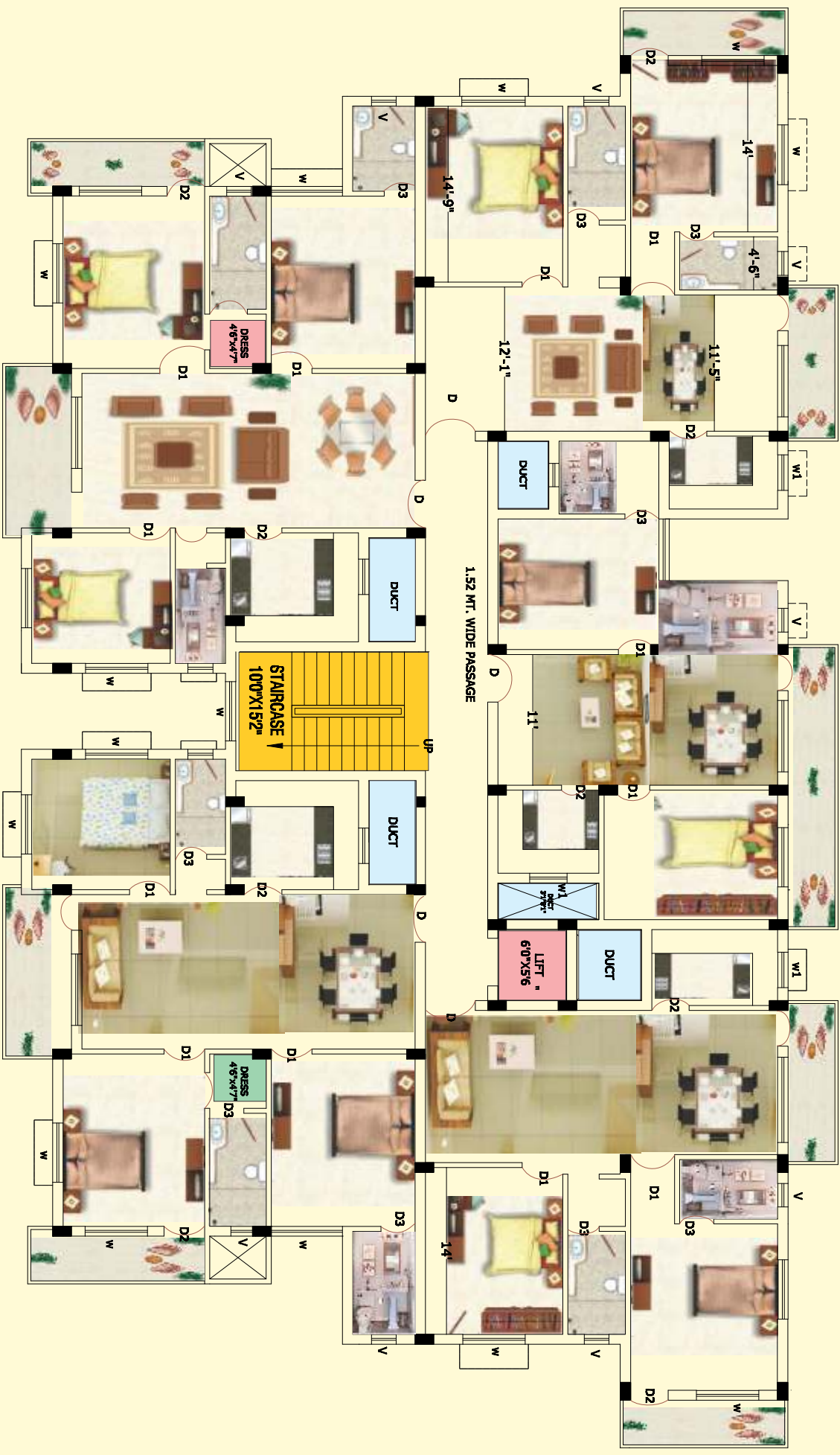
Borewell with sump and pump.

Cable TV connection & Intercom facility.

Well designed landscaped areas for recreation and children's play.

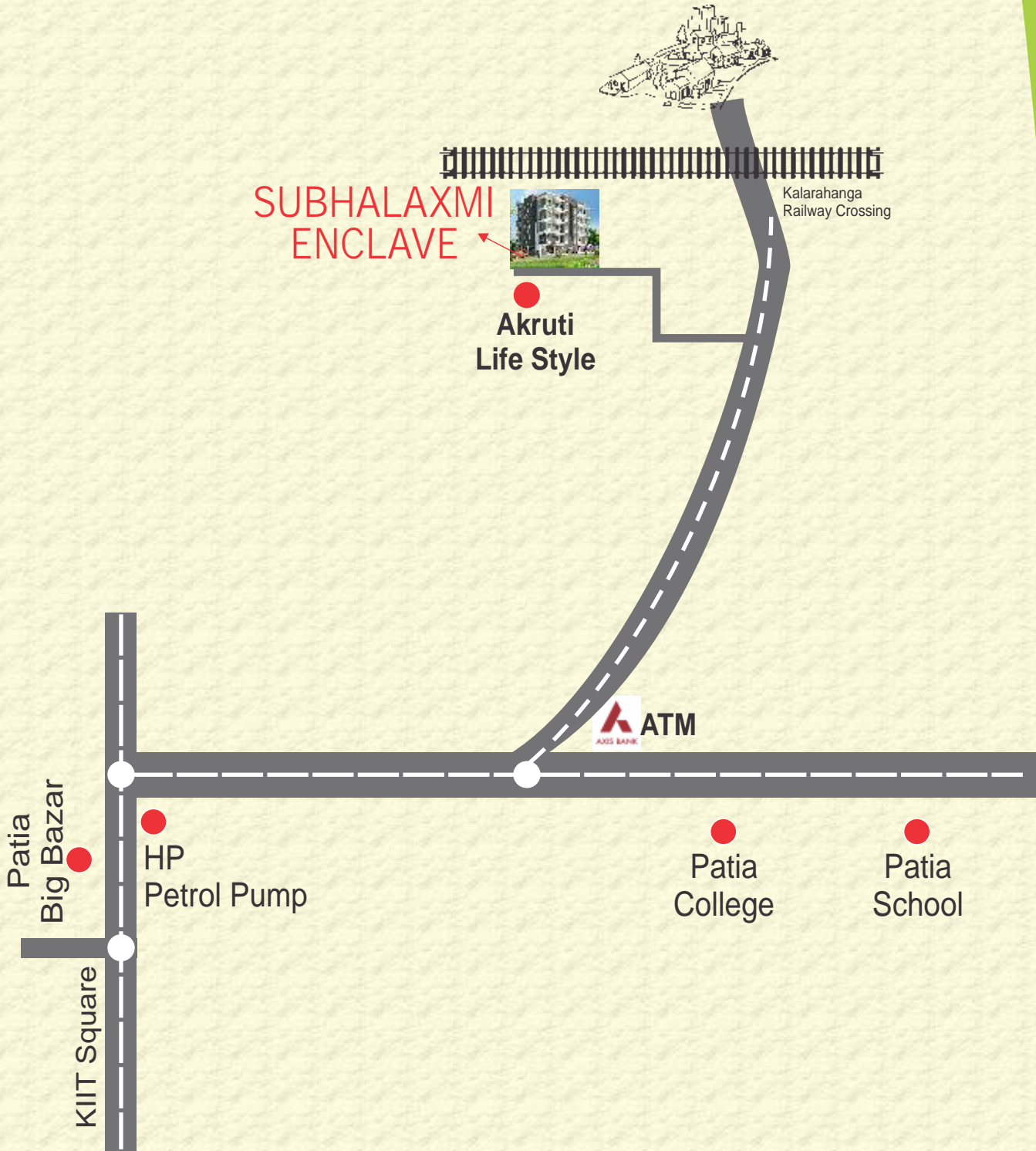


# SUBHALAXMI Enclave





# location map



SUBHALAXMI Enclave

OFFICE ADDRESS

**OM CONSTRUCTION**

PLOT NO.: 1361/2813, JAGANNATH NAGAR,  
LANE NO: 5, G.G.P COLONY,  
BHUBANESWAR-751025  
MOB.: 9337024339



PROJECT ADDRESS

**SUBHALAXMI ENCLAVE**

PLOT NO.: 336/3677 & 336/3581  
KALARAHANGA, PATIA  
BHUBANESWAR, DIST. : KHORDA  
ODISHA-751024  
*(IN FRONT OF AKRUTI LIFE STYLE)*  
MOB.: 9337024339